

Dag Hammarskjölds väg

Lund

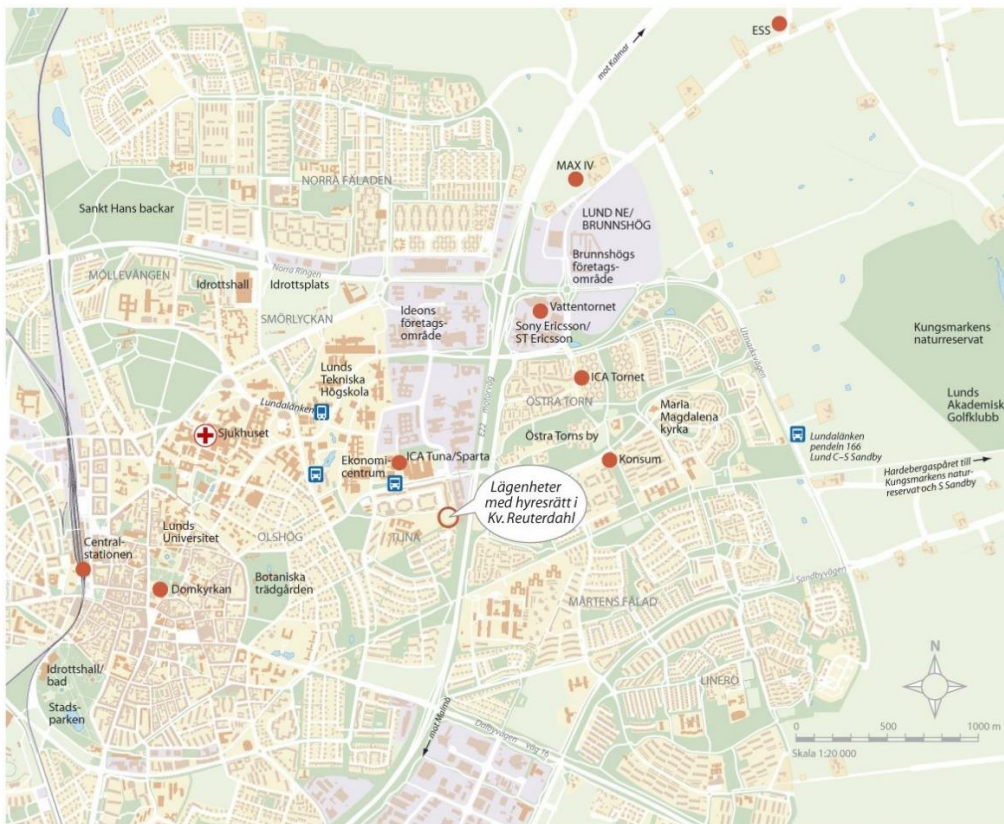


Dag Hammarskjölds väg

- 57 rental apartments
- Ideal location close to city centre and right next to Medicon Village, Ideon, LTH, Axis and Sony Mobile
- Lund central station 7 minutes away by bicycle/car
- Apartments situated in park location
- Views across city and beyond

Dag Hammarskjölds väg is located close to the shops and restaurants of Lund and at walking distance from international businesses and institutions at Ideon, Max IV, Brunnsbrogården and Lund University. Excellent bus and tram connections provide easy access to the many high-ranking schools and sports facilities of Lund. Good train connections to Malmö and Copenhagen (Copenhagen Airport 40 mins from Lund).

In the immediate neighbourhood is a large ICA supermarket, bakery, restaurants, several pre-school and Tunaskolan, one of Lund's best elementary schools.



Description

- Modern apartment buildings – designed by [Gunilla Svensson Architects](#)
- Views across Lund towards the sea
- Spacious balconies or private patios in all apartments
- Oak parquet flooring, granite countertops in kitchens
- Washer, dryer and dishwasher in every apartment
- Additional communal laundry room
- Bicycle parking
- Car park available in the area
- 100/100 Mbit internet

The apartments at Dag Hammarskjölds väg have been executed to an unusually high standard with quality materials inside and out. Heat recovery systems and solar panels ensure energy an efficient and environmentally friendly accommodation. The architect-designed apartments all have dual-aspect layouts and windows of varying sizes which create bright and artfully lit interiors. The façades display a richness of materials including brick and wooden panelling. The apartments are situated in a calm park location and each apartment comes with its own balcony or patio with additional external storage.



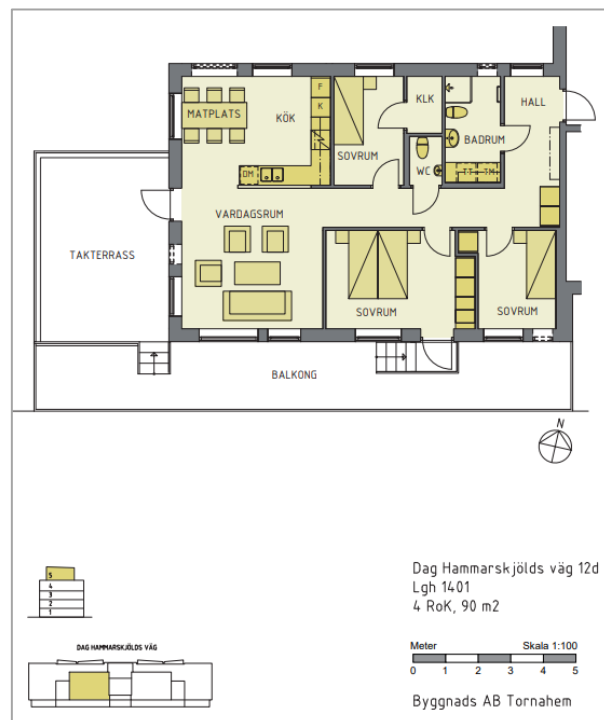
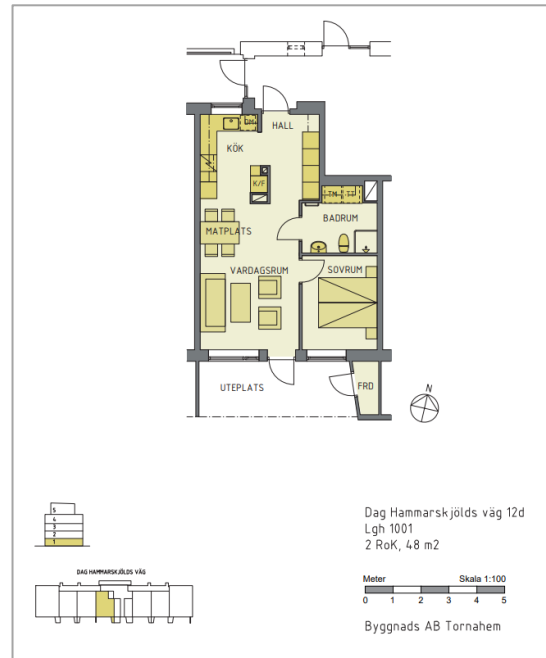


Types of apartments

- 57 apartments
- Ranging from 1-room to 4-room apartments
- 35 - 90 m² (380-970 ft²)

For the complete set of floorplans, go to:

<https://www.stadsbostader.se/reuterdal16/>



Move-in date first week of June 2022

Address:

Dag Hammarskjölds väg 12 & 14

224 64 Lund

For more information and registering your interest, contact Stadsbostäder:

<https://www.stadsbostader.se/reuterdal16/>

